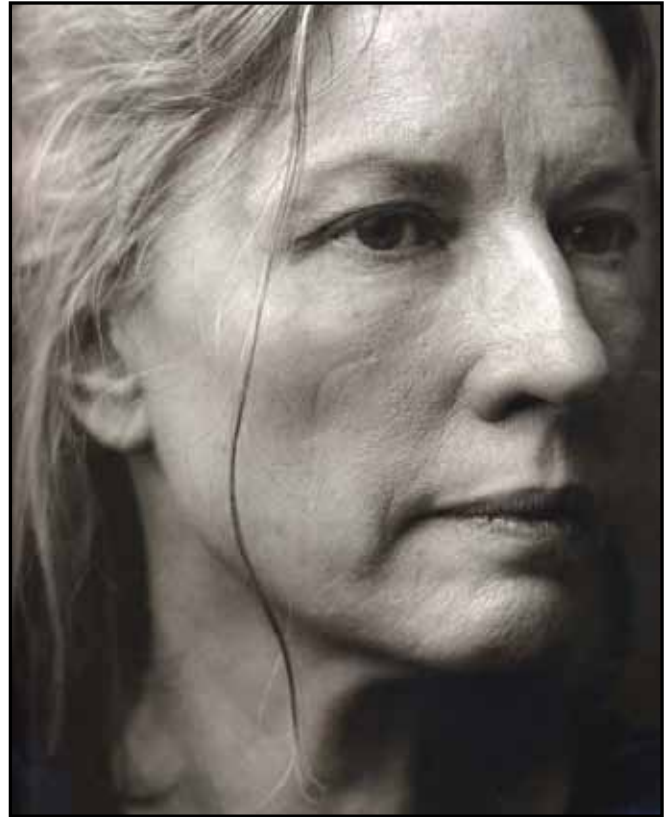


ANNIE LEIBOVITZ: WOMEN

ANNIE LEIBOVITZ: WOMEN is a unique exhibition featuring more than 60 portraits by the internationally renowned photographer. The exhibition is a celebration of the American Woman at the dawn of the new millennium and includes portraits from a broad spectrum of society. This evocative collection represents all women, from those recognized portraits of Betty Ford, Gloria Steinem, Toni Morrison and Justice Sandra Day O’Conner to images of a farmer and her daughter, coal miners, artists and many more working women. “I’m very moved by the sense of dignity these women have,” say Leibovitz.

The exhibition is drawn from the photographs in the book *Women* published by Random House in 1999. The book contains more than 100 of these wonderful portraits as well as an essay by the novelist and critic Susan Sontag. Both book and exhibition create a vivid and complex collective image of women in the twenty-first century.



Elizabeth LeCompte, Theater Director, New York City, © Annie Leibovitz

The Women’s Museum is proud to offer two different sized exhibitions to fit your museum type. We are happy to travel a larger crated exhibition as well as a smaller and easy travel exhibition.

Exhibit Specifications

Content: 64 Iris prints, mounted on aluminum, various sizes

Participation Fee: \$18,000 for 12 week booking period

Additional Costs

Host venue provides insurance and pays for round trip shipping and all exhibition-related expenses.

*If the exhibition is traveling to another venue following, the host venue is only responsible for in-bound shipping.

Size: Approximately 300 Running Feet

Crates: 16 crates, 1055 Cubic Feet

Security: Moderate

Open for booking now

For availability and additional information, contact Nicole Gilbert, Registrar, at (214) 915-0887 or nicole.gilbert@thewomensmuseum.org.